



## NDB Explorer Installation and Licensing Guide

Follow these steps to download, install, and license NDB Explorer.

### 1. Create a GE SSO Account (User ID and Password)

- a. Open the website <https://mypassword.ge.com/b2bregistration/index.html#/registration> in your web browser.
- b. Enter the required information and then click “Submit”.

### 2. Download NDB Explorer Version 3.1.1

- a. Open the website <https://www.geaerospace.com/systems/avionics/navigation-guidance/data-services> in your web browser. No login is required.
- b. Click Setup (v3.1.1) which is in the NDB Explorer section of this website

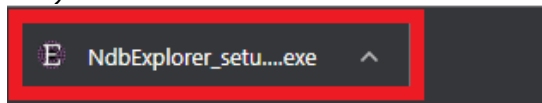
#### NDB Explorer

NDB Explorer creates aircraft loadable media, supports efficient procedure validation, and provides a top-down graphical lateral path of the procedures, airways, and company routes in your navigation database.

#### Downloadable resources:

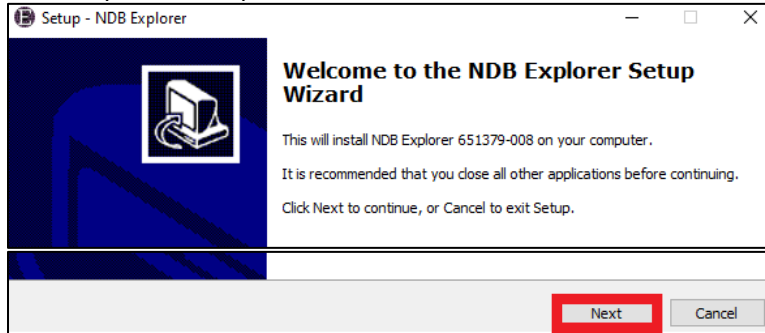
- [Setup \(v3.1.1\)](#)
- [Installation and Licensing Guide](#)
- [User Guide](#)
- [Feature Descriptions](#)

- c. The download of the NDB Explorer Setup file will start. You can see the progress of the download in the bottom left corner of your web browser.

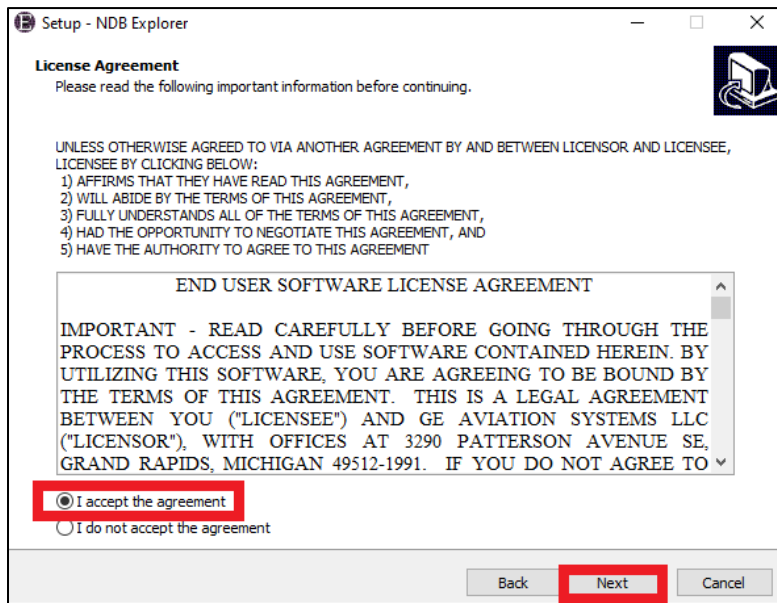


### 3. Install NDB Explorer

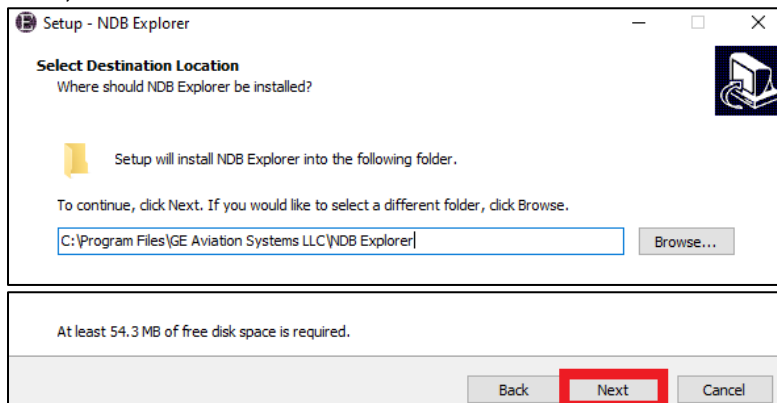
- a. Click the downloaded NdbExplorer\_setup.exe file to initiate the NDB Explorer Setup Wizard. (Note: the NdbExplorer\_setup.exe file is in the Downloads folder on your computer and can be initiated from there). When the NDB Explorer Setup Wizard initiates, click the “Next” button.



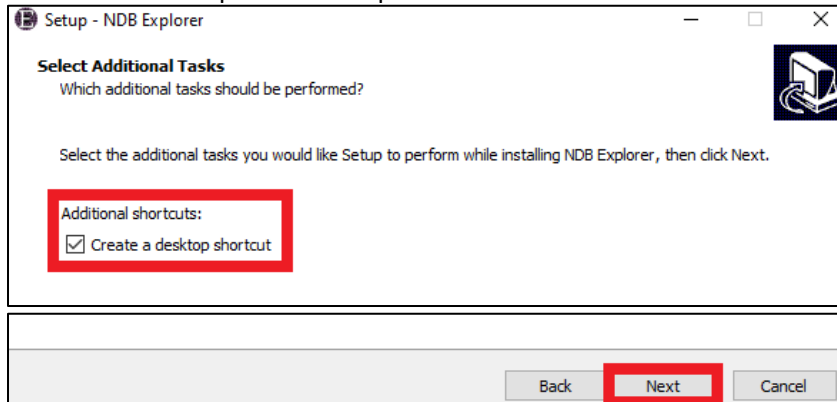
- b. After reading the End User Software License Agreement, select the “I accept the agreement” option and click the “Next” button.



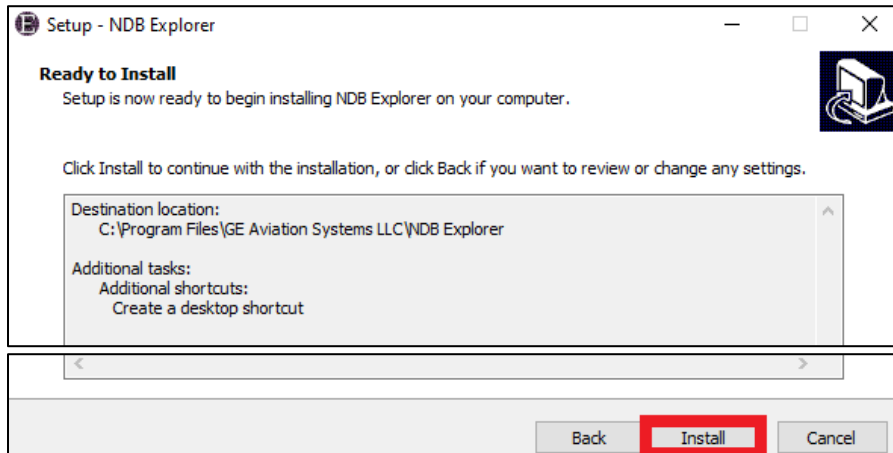
- c. Select the Destination Location where NDB Explorer will be installed (the default location is recommended) and then click the “Next” button.



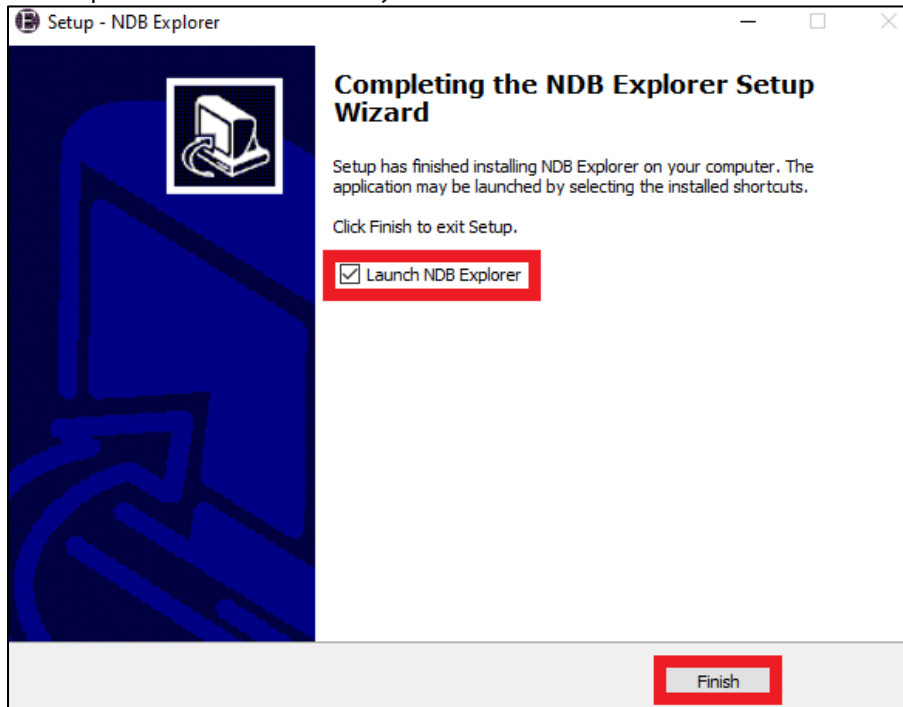
- d. Select the “Create a desktop shortcut” option (recommended) and then click the “Next” button.



- e. Click the “Install” button.



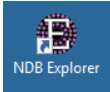
- f. When the installation completes, click the “Finish” button. Note: if the “Launch NDB Explorer” checkbox is checked, NDB Explorer will launch when you click Finish.



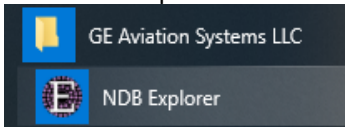
## 4. License NDB Explorer

Each installation of NDB Explorer requires a unique License file. Licenses cannot be shared between computers.

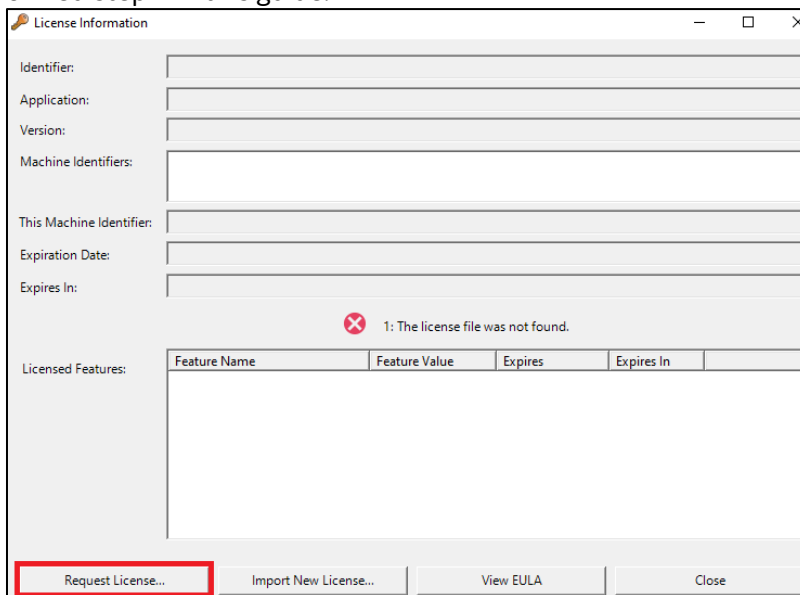
- a. Launch NDB Explorer using one of these methods:
  - i. Double-click the NDB Explorer desktop shortcut.



- ii. Click NDB Explorer from the Windows Start menu.



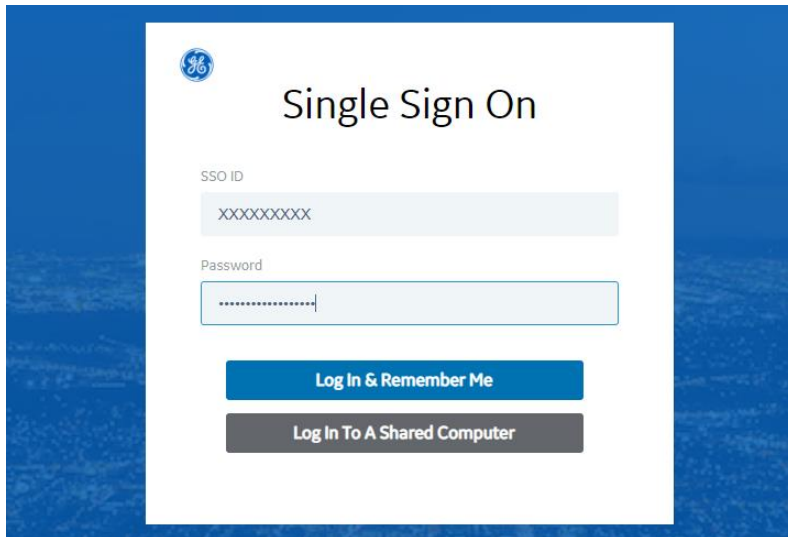
- b. Click the “Request License...” button (outlined in red in the picture below). This will open the “Navigation & Guidance” web portal in your web browser. If a web browser does not open, then ensure you have performed step 2 in this guide.



- c. Register your GE SSO Account on the “Navigation & Guidance” web portal:
  - i. Click the LOGIN OPTIONS button located in the upper right area or the GE SSO LOGIN button located in the lower left area (outlined in red in the picture below).



- ii. Enter your GE SSO User ID and Password (created in step 1a) and click either of the “Log In” buttons.



- iii. Enter Your Company Name and the Navigation Database Identifiers which you want to use in NDB Explorer (e.g. “ABC1”). Then click the “SUBMIT” button.

Account Registration Form

Your Company Name  
Field can not be empty 0 / 50

Enter Navigation Database Identifiers  
Databases owned by your organisation 0 / 255

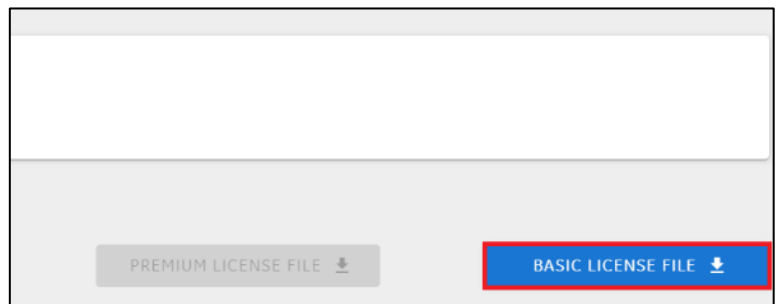
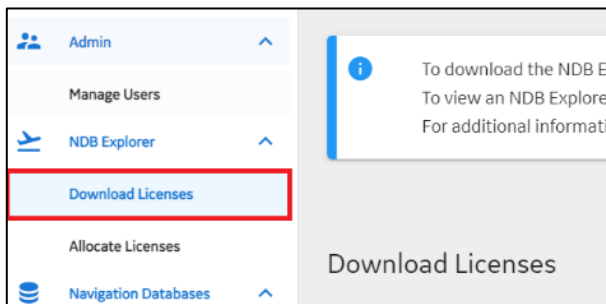
SUBMIT

- iv. The GE Aviation FMS Navigation Database team will be notified of your account registration and will approve your account within one business day. You will receive an email when your account has been approved.

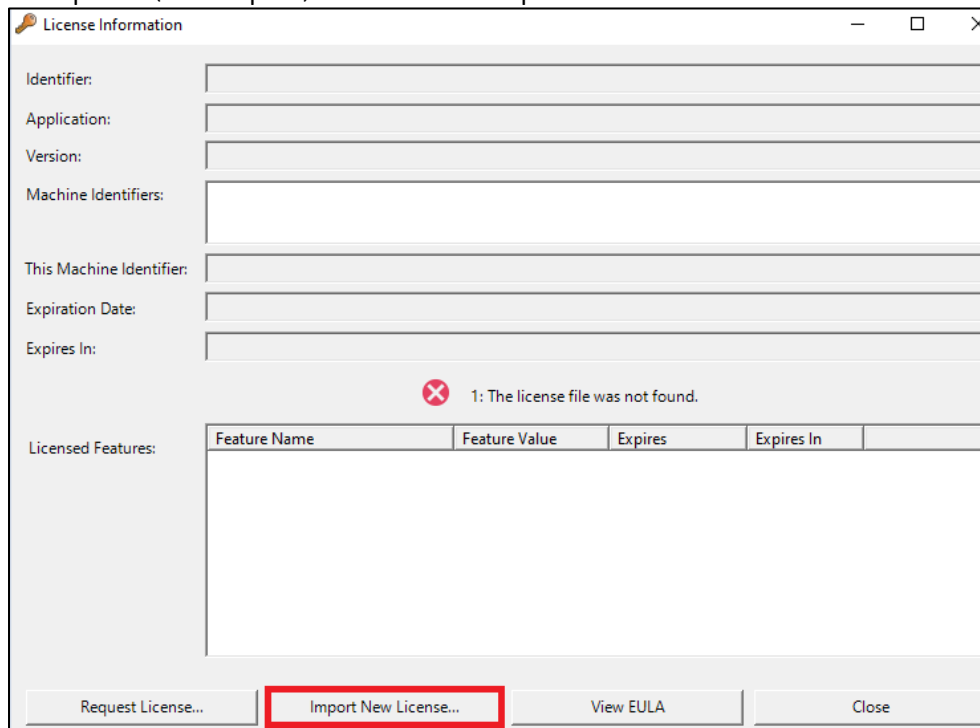
- d. Log in to the “Navigation & Guidance” web portal:
  - i. Open <https://ngp.geaviation.com/home> in your web browser
  - ii. Click the LOGIN OPTIONS button located in the upper right area or the GE SSO LOGIN button located in the lower left area (outlined in red in the picture below)



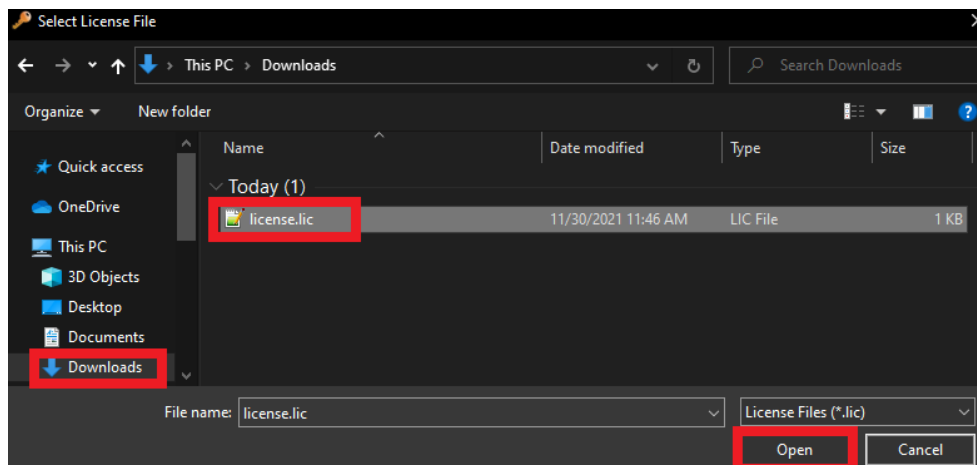
- e. Click the “Download Licenses” button and then click the “Basic License File” button to download your NDB Explorer license. Your NDB Explorer license will be downloaded to your Downloads folder.



f. Launch NDB Explorer (see step 3b) and click the “Import New License...” button.



g. Navigate to your Downloads folder and select the “license.lic” file. Then click the “Open” button.



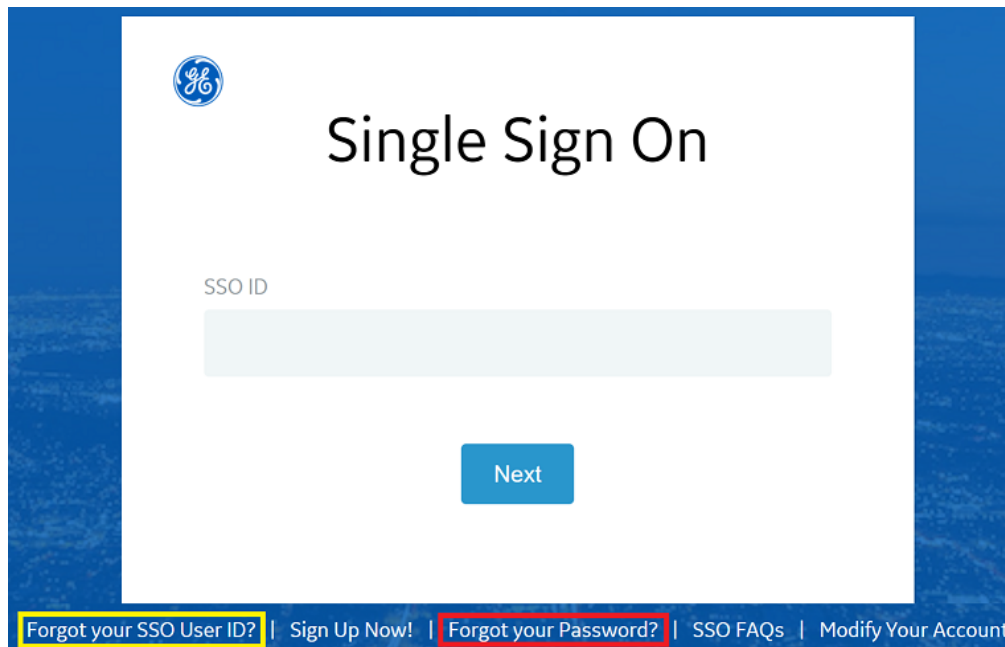


## Recovering your SSO ID or Resetting your Password

Click the LOGIN button on the [Navigation & Guidance Web Portal](#) (see step 3e of this document).

To recover your SSO ID, click “Forgot your SSO User ID” shown in the yellow box below and follow the steps that are provided.

To reset your Password, click “Forgot your Password?” shown in the red box below and follow the steps that are provided.



## Other Information

For additional information about other NDB services visit our website:

<https://www.geaerospace.com/systems/avionics/navigation-guidance/data-services>

If you have any questions or experience any issues, please complete this form:

<https://www.geaerospace.com/systems/contact-us>

Thank You,  
The GE Aviation FMS Navigation Database Team